



For Use in CCO Written Examinations

NATIONAL (Boom Truck) LOAD CHART

TELESCOPIC BOOM CRANE—SWING CAB (TLL)

This supplement is used for the following exams:

- **National Telescopic Boom—Swing Cab**
- **National Telescopic Boom—Swing Cab Recertification**

These charts have been adapted from the original manufacturer's charts for use in CCO Written Examinations.

This supplement is not to be used for any other purpose.

Copyright 1996–2016 National Commission for the Certification of Crane Operators (NCCCO). All rights reserved. This document may not be reproduced in whole or in part without express written permission of the manufacturer and the consent of NCCCO.

HOLD HARMLESS/RELEASE AGREEMENT

The user of this publication for and in consideration of the assistance, cooperation, and information provided by the National Commission for the Certification of Crane Operators (NCCCO) in this publication, *Mobile Crane Load Chart Manual*, the receipt of which is acknowledged, does hereby and for all future time release and hold harmless from any liability, and forever discharge for itself, its administrators and assigns the said NCCCO from all and any manner of action or demands whatsoever in law, in admiralty, or in equity, which against NCCCO anyone ever had, now have, or which shall later be claimed. This Agreement relates specifically to any cause of action arising out of the publication, information provided, subsequent conduct, and any use of the information provided in this publication and related uses or demonstrations of skills, methods, and techniques cited in the publication. This mutually beneficial release and hold-harmless agreement may not be changed orally and exists in perpetuity. This publication is issued solely as a public service to improve the lifting industry and promote public safety.

NO WARRANTY

Information and materials provided in this *Mobile Crane Load Chart Manual* are provided “as is” without warranty of any kind, either express or implied, including without limitation warranties of merchantability, fitness for a particular purpose, and non-infringement. NCCCO specifically does not make any warranties or representations as to the accuracy or completeness of any such information and materials. Under no circumstances shall NCCCO be liable for any loss, damage, liability, or expense incurred or suffered which is claimed to have resulted from use of this publication, including without limitation, any fault, error, omission, interruption, or delay with respect thereto. Use of this publication is at user’s sole risk. Under no circumstances, including, but not limited to, negligence, shall NCCCO be liable for any direct, indirect, incidental, special, or consequential damages, even if NCCCO has been advised of the possibility of such damages.

Copyright 1996–2016 by the National Commission for the Certification of Crane Operators. All rights reserved. No part of this book may be reproduced or transmitted in any form or by any means, electronic or mechanical, including photocopying, recording, or by any information storage and retrieval system, without prior written permission from the publisher. For information, contact the publisher, the National Commission for the Certification of Crane Operators, at info@nccco.org.

TABLE OF CONTENTS

GENERAL NOTES	2-3
WT. REDUCTIONS / LINE PULLS & REEVING INFO	4
LIFTING AREA DIAGRAM	4
RANGE DIAGRAM w/ EXTENSION	5

WITH 3000 lb COUNTERWEIGHT

ON OUTRIGGERS FULLY EXTENDED

MAIN BOOM 360°	6
MAIN BOOM 360° with 26' FIXED or 26-45' TELE EXTENSION STOWED	7
MAIN BOOM 360° with 26' ERECTED or 26-45' TELE EXT ERECTED, RETRACTED	8
MAIN BOOM 360° with 26-45' TELE EXT ERECTED, EXTENDED	9
MAIN BOOM OVER REAR	10
MAIN BOOM OVER REAR with 26' FIXED or 26-45' TELE EXTENSION STOWED	11
EXTENSION 360°	12
EXTENSION OVER REAR	13

ON OUTRIGGERS 50% EXTENDED

MAIN BOOM 360°	14
MAIN BOOM 360° with 26' FIXED or 26-45' TELE EXTENSION STOWED	15
MAIN BOOM 360° with 26' ERECTED or 26-45' TELE EXT ERECTED, RETRACTED	16
MAIN BOOM 360° with 26-45' TELE EXT ERECTED, EXTENDED	17
EXTENSION	18

ON OUTRIGGERS 0% EXTENDED

MAIN BOOM 360°	19
MAIN BOOM 360° WITH 26' FIXED or 26-45' TELE EXTENSION STOWED	20

NOTES FOR LIFTING CAPACITIES

GENERAL:

1. Rated loads as shown on lift chart pertain to this machine as originally manufactured and equipped. Modifications to the machine or use of optional equipment other than that specified can result in a reduction of capacity.
2. Construction equipment can be hazardous if improperly operated or maintained. Operation and maintenance of this machine shall be in compliance with the information in the Operator's and Safety Handbook, Service Manual and Parts Manual supplied with this machine. If these manuals are missing, order replacements from the manufacturer through the distributor.
3. The operator and other personnel associated with machine shall fully acquaint themselves with the latest American National Safety Standards (ASME/ANSI) for cranes.

SETUP:

1. The machine shall be level and on a firm supporting surface. Depending on the nature of the supporting surface, it may be necessary to have structural supports under the outrigger floats or tires to spread the load to a larger bearing surface.
2. For outrigger operation, all outriggers shall be properly extended with tires raised free of crane weight before operating the boom or lifting loads.
3. When machine is equipped with center front stabilizer, the front stabilizer shall be set in accordance with instructions in Operator's and Safety Handbook.
4. When equipped with removable and/or extendible counterweight, the proper counterweight shall be installed and fully extended before and during operation.
5. With certain boom and hoist tackle combinations, maximum capacities may not be obtainable with standard wire rope lengths.
6. Unless approved by the crane manufacturer, do not travel with boom extension or jib erected unless otherwise noted. Refer to Operator's and Safety Handbook for job-site travel information.
7. Inspect vehicle and crane including crane operation prior to use each day.
8. Always level the crane with the level indicator located at each outrigger control station.

OPERATION:

1. Rated loads at rated radius shall not be exceeded. Do not attempt to tip the machine to determine allowable loads. For clamshell, grapple, magnet or concrete bucket operation, weight of component and load must not exceed 80% of rated lifting capacities.
2. All rated loads have been tested to and meet the requirements of SAE J1063 - Cantilevered Boom Crane Structures - Method of Test, and do not exceed 85% of the tipping load on outriggers fully extended, and SAE J1289 - Mobile Crane Stability Ratings [1.25P < (T-0.1A)] on outriggers 50% and 0% extended (fully retracted) as determined by SAE J765 - Crane Stability Test Code.
3. Rated loads include the weight of hookblock, slings and auxiliary lifting devices and their weights shall be subtracted from the listed rating to obtain the net load to be lifted. When more than the minimum required parts of line needed to pick the load are used, the additional rope weight as measured from the lower sheaves of the main boom head shall be considered part of the load to be lifted. When both the hook block and headache ball are reeved, the lifting device that is NOT in use, including the line as measured from the lower sheave(s) of the head supporting the unused device shall be considered part of the load.
4. Load ratings are based on freely suspended loads. No attempt shall be made to move a load horizontally on the ground in any direction.
5. The maximum in-service wind speed is 20 m.p.h. on the boom capacities and 15 m.p.h. on the extension capacities. It is recommended when wind velocity is above 20 m.p.h., rated loads and boom lengths shall be appropriately reduced. For machines not in-service, the main boom should be retracted and lowered with the swing brake set in wind velocities over 30 m.p.h.
6. Rated loads are for lift crane service only.
7. Do not operate at a radius or boom length where capacities are not listed. At these positions, the machine may overturn without any load on the hook.
8. The maximum load which can be telescoped is not definable because of variations in loadings and crane maintenance, but it is safe to attempt retraction and extension of the boom within the limits of the capacity chart.
9. When the boom length or lift radius or both are between values listed, the smallest load shown at either the next larger radius or next longer or shorter boom length shall be used.
10. For safe operation, the user shall make due allowances for his particular job conditions, such as: soft or uneven ground, out of level conditions, high winds, side loads, pendulum action, jerking or sudden stopping of loads, experience of personnel, two machine (tandem) lifts, traveling with loads, electric wires, obstacles, hazardous conditions, etc. Side pull on boom or extension is extremely dangerous.

NOTES FOR LIFTING CAPACITIES (cont'd.)

OPERATION (cont'd.):

11. When handling personnel, the requirements of the applicable national, state, and local regulations and safety codes must be met.
12. The boom angle before loading should be greater than the loaded boom angle to account for deflection.
13. Capacities appearing above the bold line are based on structural strength and tipping should not be relied upon as a capacity limitation.
14. When operating the machine in the "On Outriggers 50% Extended " mode, the outrigger beam pins must be engaged. When operating in the "On Outriggers 0% Extended " mode, the outrigger beams must be fully retracted. Failure to follow these precautions could result in structural damage or loss of stability of the machine.
15. Do not lift loads when boom is fully lowered. The Load Moment Indicator (LMI) senses pressure and will not provide warnings or lockout. The crane can become overloaded if lift cylinder(s) is fully retracted.
16. Use LMI/angle indicator as reference only.
17. Do not exceed extension capacities at any reduced boom length.
18. Capacities for the 31.2 ft. boom length shall be lifted with boom fully retracted. If boom is not fully retracted, capacities shall not exceed those shown for the 38 ft. boom length.
19. Always pay out load line before extending boom to avoid damaging loadline or crane structure or tripping anti-two-block system.
20. The maximum outrigger pad load is 73,000 lb (for a GVW of 19,760 lb - minimum chassis requirement).
21. Loads lifted must be within safe winch capacity. Multiple part rope reeving must be used on loads exceeding winch single part rated pull. Auxiliary boom head rated for single part use except multi-reeve group used for nominal rated load. Extensions are rated for single part use only.
22. Do not operate the boom over personnel or allow them to walk or stand beneath the boom or load.
23. Do not allow personnel on carrier deck or crane frame area when rotating crane.
24. Do not allow personnel to ride on hook, hook block, load or any device attached to the loadline. Handling of personnel is only permitted with full extension of all outrigger beams. Use only National Crane approved baskets.
25. If using offset extension, do not use personnel basket with extension deployed at 30 degree offset.
26. Operate controls slowly and smoothly to avoid damage to crane or personnel.
27. Boom must be in carrying rack and outriggers fully retracted for travel.

WEIGHT REDUCTIONS FOR LOAD HANDLING DEVICES

AUXILIARY BOOM HEAD	71 lb
HOOKBLOCKS and HEADACHE BALLS:	
55 ton, 5 sheave	1098 lb+
40 ton, 3 sheave	600 lb+
20 ton, 1 sheave	400 lb+
7 ton overhaul ball	171 lb+

+Refer to rating plate for actual weight.

When lifting over boom extension, deduct total weight of all load handling devices reeved over main boom head directly from boom extension capacity.

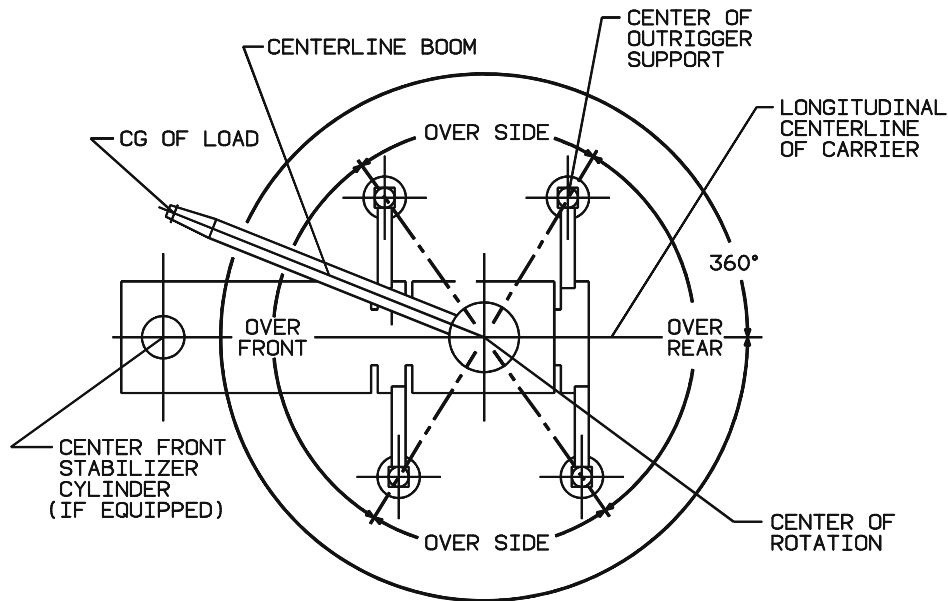
NOTE: All load handling devices and boom attachments are considered part of the load and suitable allowances **MUST BE MADE** for their combined weights. Weights are for Manitowoc furnished equipment.

LINE PULLS AND REEVING INFORMATION

HOIST	WIRE ROPE SPECS.	PERMISSIBLE LINE PULLS	NOMINAL WIRE ROPE LENGTH
Main Standard	5/8" (16 mm) Dyform 34 LR Rotation Resistant (Non-rotating) Min. Breaking Strength 56,420 lb	11,280 lb	450 ft.
Main & Aux Optional	5/8" (16 mm) 6x19 Class EEIPS, IWRC Min. Breaking Strength 45,400 lb	11,280 lb	450 ft.

The approximate weight of 5/8" wire rope is 1.0 lb/ft.

Parts of line	1	2	3	4	5	6	7	8	9
Max. boom length (ft.) at max. elevation with stated rigging and load block at ground level	147 (includes 45' ext.)	102	102	81	66	55	47	40	35
Maximum Load (lb)	11280	22560	33840	45120	56400	67680	78960	90240	100000

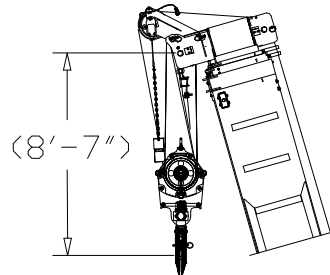
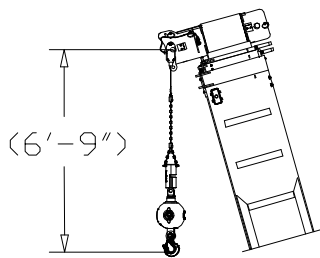
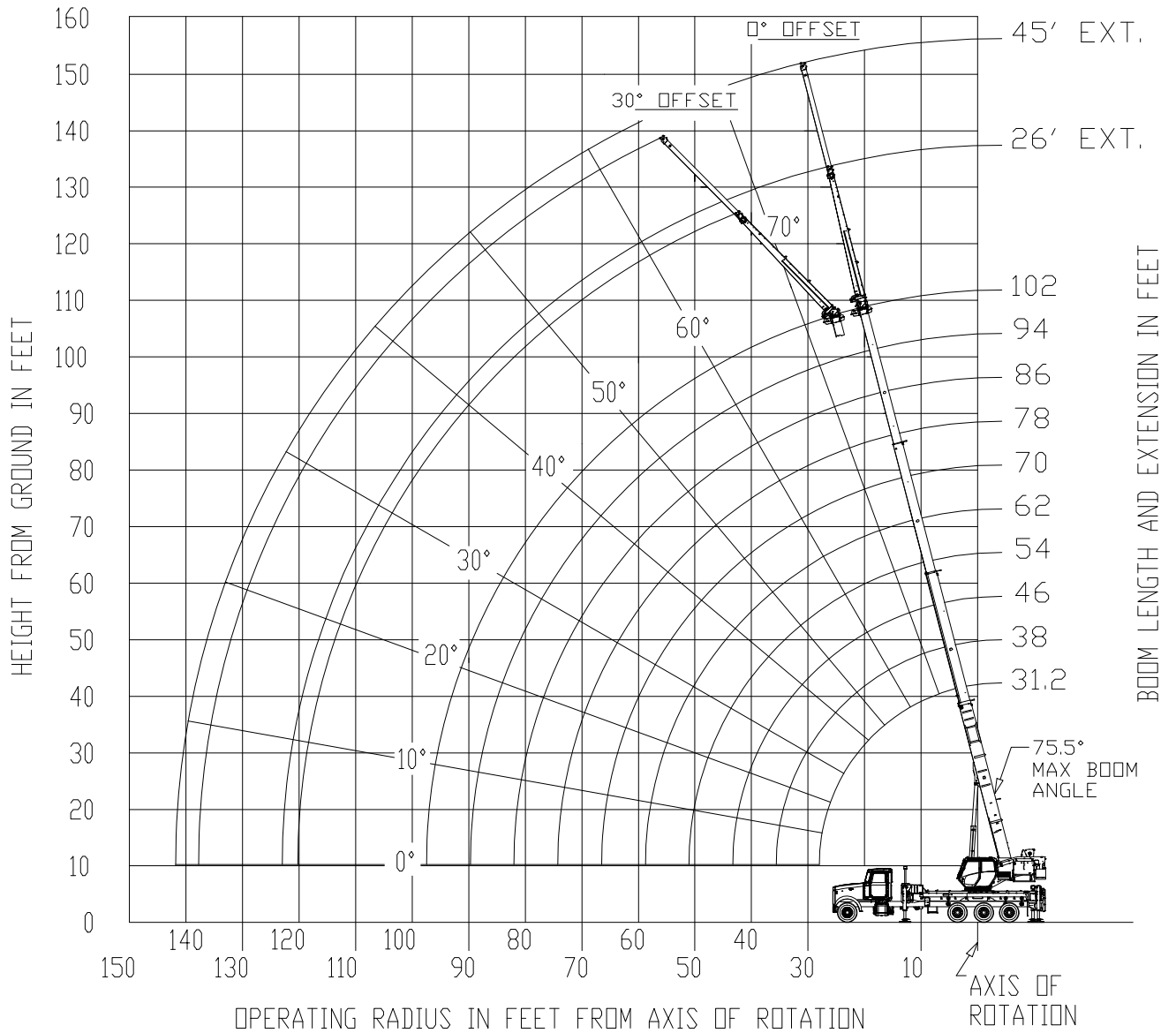


**BOLD LINES DETERMINE THE LIMITING POSITION OF ANY
LOAD FOR OPERATION WITHIN WORKING AREAS INDICATED**

WORKING AREA DIAGRAM

GEOMETRIC RANGE DIAGRAM

(BOOM DEFLECTION NOT SHOWN)



DIMENSIONS ARE FOR LARGEST FURNISHED HOOK BLOCK & HEADACHE BALL, WITH ANTI-TWO BLOCK ACTIVATED.

*THIS DRAWING SHOWS THE PHYSICAL REACH OF THE MACHINE. ALWAYS REFER TO LOAD CHART TO SEE WHICH PORTIONS OF THIS DIAGRAM ARE VALID FOR THE SPECIFIC MACHINE CONFIGURATION AND WHERE THE LOADS ARE STRUCTURALLY OR STABILITY LIMITED.

RATED LIFTING CAPACITIES IN POUNDS WITH 3000 lb COUNTERWEIGHT
31.2 FT. - 102 FT. BOOM

ON OUTRIGGERS FULLY EXTENDED - 360°

Radius in Feet	#0001									
	Main Boom Length in Feet									
	31.2	38	46	54	62	70	78	86	94	102
8	100,000 (68.3)									
10	93,350 (64.2)	51,200 (69.2)	50,350 (73.1)							
12	80,950 (59.9)	51,200 (65.8)	50,350 (70.4)	50,250 (73.7)						
15	64,400 (53)	51,200 (60.7)	50,350 (66.4)	50,250 (70.3)	50,000 (73.3)					
20	47,300 (39.8)	47,650 (51.3)	47,950 (59.3)	48,150 (64.5)	46,450 (68.4)	41,000 (71.3)	34,350 (73.7)			
25	31,500 (20)	37,050 (40.3)	37,400 (51.4)	37,600 (58.3)	37,800 (63.2)	35,950 (66.9)	30,150 (69.7)	26,800 (72.2)	23,800 (74.2)	
30		29,000 (25.7)	29,850 (42.6)	30,050 (51.6)	30,250 (57.7)	30,350 (62.2)	26,750 (65.7)	23,800 (68.6)	21,250 (71)	18,950 (72.9)
35			23,600 (31.9)	23,900 (44.2)	24,100 (51.8)	24,250 (57.3)	23,700 (61.5)	21,250 (64.9)	18,950 (67.7)	17,000 (69.9)
40			*16,000 (15.1)	18,700 (35.6)	18,900 (45.4)	19,050 (52)	19,200 (57)	19,100 (61.1)	17,100 (64.3)	15,350 (66.9)
45				15,050 (24.4)	15,250 (38.2)	15,400 (46.4)	15,500 (52.3)	15,650 (57)	15,550 (60.8)	13,950 (63.7)
50					12,550 (29.5)	12,700 (40.1)	12,800 (47.2)	12,900 (52.6)	13,000 (56.9)	12,700 (60.5)
55					10,550 (18.5)	10,700 (33.7)	10,800 (42.3)	10,900 (48.5)	11,000 (53.3)	11,100 (57.3)
60						9,050 (24.8)	9,150 (36.2)	9,250 (43.6)	9,350 (49.2)	9,400 (53.6)
65						*6,400 (9.8)	7,800 (29)	7,900 (38.2)	8,000 (44.7)	8,050 (49.8)
70							6,650 (19.3)	6,750 (32.1)	6,850 (39.9)	6,900 (45.7)
75								5,800 (24.6)	5,900 (34.5)	5,950 (41.4)
80								5,000 (13.2)	5,100 (28.3)	5,150 (36.6)
85									4,350 (20.1)	4,450 (31.1)
90										3,800 (24.6)
95										3,250 (15.3)
97										*2,000 (8.7)
Minimum boom angle (°) for indicated length (no load)										0
Maximum boom length (ft.) at 0° boom angle (no load)										102

NOTE: () Boom angles are in degrees.

*Loads are structurally limited.

#LMI operating code. Refer to LMI manual for operating instructions.

Lifting Capacities at Zero Degree Boom Angle										
Boom Angle	Main Boom Length in Feet									
	31.2	38	46	54	62	70	78	86	94	
0°	12,450 (27)	9,250 (33.8)	6,750 (41.8)	5,000 (49.8)	3,700 (57.8)	2,700 (65.8)	1,950 (73.8)	1,300 (81.8)	700 (89.8)	

NOTE: () Reference radii in feet.

**RATED LIFTING CAPACITIES IN POUNDS WITH 3000 lb COUNTERWEIGHT
31.2' - 102' BOOM WITH 26' FIXED or 26-45' TELE EXTENSION STOWED**

ON OUTRIGGERS FULLY EXTENDED - 360°

Radius in Feet	#0002									
	Main Boom Length in Feet									
	31.2	38	46	54	62	70	78	86	94	102
8	98,900 (68.3)									
10	92,250 (64.2)	50,300 (69.2)	49,600 (73.1)							
12	79,850 (59.9)	50,300 (65.8)	49,600 (70.4)	49,600 (73.7)						
15	63,300 (53)	50,300 (60.7)	49,600 (66.4)	49,600 (70.3)	49,450 (73.3)					
20	46,200 (39.8)	46,750 (51.3)	47,200 (59.3)	47,550 (64.5)	45,900 (68.4)	40,550 (71.3)	33,950 (73.7)			
25	30,400 (20)	36,150 (40.3)	36,650 (51.4)	37,000 (58.3)	37,250 (63.2)	35,500 (66.9)	29,750 (69.7)	26,400 (72.2)	23,450 (74.2)	
30		28,100 (25.7)	29,100 (42.6)	29,450 (51.6)	29,700 (57.7)	29,900 (62.2)	26,350 (65.7)	23,400 (68.6)	20,900 (71)	18,650 (72.9)
35			22,850 (31.9)	23,300 (44.2)	23,550 (51.8)	23,800 (57.3)	23,300 (61.5)	20,850 (64.9)	18,600 (67.7)	16,700 (69.9)
40			*15,250 (15.1)	18,100 (35.6)	18,350 (45.4)	18,600 (52)	18,800 (57)	18,700 (61.1)	16,750 (64.3)	15,050 (66.9)
45				14,450 (24.4)	14,700 (38.2)	14,950 (46.4)	15,100 (52.3)	15,250 (57)	15,200 (60.8)	13,650 (63.7)
50					12,000 (29.5)	12,250 (40.1)	12,400 (47.2)	12,500 (52.6)	12,600 (56.9)	12,400 (60.5)
55					10,000 (18.5)	10,250 (33.7)	10,400 (42.3)	10,500 (48.5)	10,650 (53.3)	10,800 (57.3)
60						8,600 (24.8)	8,750 (36.2)	8,850 (43.6)	9,000 (49.2)	9,100 (53.6)
65						*5,950 (9.8)	7,400 (29)	7,500 (38.2)	7,650 (44.7)	7,750 (49.8)
70							6,250 (19.3)	6,350 (32.1)	6,500 (39.9)	6,600 (45.7)
75								5,400 (24.6)	5,550 (34.5)	5,650 (41.4)
80								4,600 (13.2)	4,750 (28.3)	4,850 (36.6)
85									4,000 (20.1)	4,150 (31.1)
90										3,500 (24.6)
95										2,950 (15.3)
97										*1,700 (8.7)
Minimum boom angle (°) for indicated length (no load)										0
Maximum boom length (ft.) at 0° boom angle (no load)										102

NOTE: () Boom angles are in degrees.

*Loads are structurally limited.

#LMI operating code. Refer to LMI manual for operating instructions.

Lifting Capacities at Zero Degree Boom Angle										
Boom Angle	Main Boom Length in Feet									
	31.2	38	46	54	62	70	78	86		
0°	11,350 (27)	8,350 (33.8)	6,000 (41.8)	4,400 (49.8)	3,150 (57.8)	2,250 (65.8)	1,550 (73.8)	900 (81.8)		

NOTE: () Reference radii in feet.

**RATED LIFTING CAPACITIES IN POUNDS WITH 3000 lb COUNTERWEIGHT
31.2' - 102' BOOM WITH 26' FIXED ERECTED or 26-45' EXT ERECTED, RETRACTED
ON OUTRIGGERS FULLY EXTENDED - 360°**

Radius in Feet	#0017									
	Main Boom Length in Feet									
	31.2	38	46	54	62	70	78	86	94	102
8	97,450 (68.3)									
10	90,800 (64.2)	48,800 (69.2)	48,050 (73.1)							
12	78,400 (59.9)	48,800 (65.8)	48,050 (70.4)	48,000 (73.7)						
15	61,850 (53)	48,800 (60.7)	48,050 (66.4)	48,000 (70.3)	47,800 (73.3)					
20	44,750 (39.8)	45,250 (51.3)	45,650 (59.3)	45,900 (64.5)	44,250 (68.4)	38,850 (71.3)	32,250 (73.7)			
25	28,950 (20)	34,650 (40.3)	35,100 (51.4)	35,350 (58.3)	35,600 (63.2)	33,800 (66.9)	28,050 (69.7)	24,700 (72.2)	21,750 (74.2)	
30		26,600 (25.7)	27,550 (42.6)	27,800 (51.6)	28,050 (57.7)	28,200 (62.2)	24,650 (65.7)	21,700 (68.6)	19,200 (71)	16,900 (72.9)
35			21,300 (31.9)	21,650 (44.2)	21,900 (51.8)	22,100 (57.3)	21,600 (61.5)	19,150 (64.9)	16,900 (67.7)	14,950 (69.9)
40			*13,700 (15.1)	16,450 (35.6)	16,700 (45.4)	16,900 (52)	17,100 (57)	17,000 (61.1)	15,050 (64.3)	13,300 (66.9)
45				12,800 (24.4)	13,050 (38.2)	13,250 (46.4)	13,400 (52.3)	13,550 (57)	13,500 (60.8)	11,900 (63.7)
50					10,350 (29.5)	10,550 (40.1)	10,700 (47.2)	10,800 (52.6)	10,950 (56.9)	10,650 (60.5)
55					8,350 (18.5)	8,550 (33.7)	8,700 (42.3)	8,800 (48.5)	8,950 (53.3)	9,050 (57.3)
60						6,900 (24.8)	7,050 (36.2)	7,150 (43.6)	7,300 (49.2)	7,350 (53.6)
65						*4,250 (9.8)	5,700 (29)	5,800 (38.2)	5,950 (44.7)	6,000 (49.8)
70							4,550 (19.3)	4,650 (32.1)	4,800 (39.9)	4,850 (45.7)
75								3,700 (24.6)	3,850 (34.5)	3,900 (41.4)
80								2,900 (13.2)	3,050 (28.3)	3,100 (36.6)
85									2,300 (20.1)	2,400 (31.1)
90										1,750 (24.6)
95										1,200 (15.3)
Minimum boom angle (°) for indicated length (no load)						0	2	5	7	10
Maximum boom length (ft.) at 0° boom angle (no load)						70				

NOTE: () Boom angles are in degrees.

*Loads are structurally limited.

#LMI operating code. Refer to LMI manual for operating instructions.

Lifting Capacities at Zero Degree Boom Angle										
Boom Angle	Main Boom Length in Feet									
	31.2	38	46	54	62	70				
0°	9,900 (27)	6,850 (33.8)	4,450 (41.8)	2,750 (49.8)	1,500 (57.8)	550 (65.8)				

NOTE: () Reference radii in feet.

**RATED LIFTING CAPACITIES IN POUNDS WITH 3000 lb COUNTERWEIGHT
31.2' - 102' BOOM WITH 26-45' EXT ERECTED, EXTENDED**

ON OUTRIGGERS FULLY EXTENDED - 360°

Radius in Feet	#0018									
	Main Boom Length in Feet									
	31.2	38	46	54	62	70	78	86	94	102
8	97,050 (68.3)									
10	90,400 (64.2)	48,450 (69.2)	47,800 (73.1)							
12	78,000 (59.9)	48,450 (65.8)	47,800 (70.4)	47,800 (73.7)						
15	61,450 (53)	48,450 (60.7)	47,800 (66.4)	47,800 (70.3)	47,650 (73.3)					
20	44,350 (39.8)	44,900 (51.3)	45,400 (59.3)	45,700 (64.5)	44,100 (68.4)	38,700 (71.3)	32,100 (73.7)			
25	28,550 (20)	34,300 (40.3)	34,850 (51.4)	35,150 (58.3)	35,450 (63.2)	33,650 (66.9)	27,900 (69.7)	24,600 (72.2)	21,600 (74.2)	
30		26,250 (25.7)	27,300 (42.6)	27,600 (51.6)	27,900 (57.7)	28,050 (62.2)	24,500 (65.7)	21,600 (68.6)	19,050 (71)	16,800 (72.9)
35			21,050 (31.9)	21,450 (44.2)	21,750 (51.8)	21,950 (57.3)	21,450 (61.5)	19,050 (64.9)	16,750 (67.7)	14,850 (69.9)
40			*13,450 (15.1)	16,250 (35.6)	16,550 (45.4)	16,750 (52)	16,950 (57)	16,900 (61.1)	14,900 (64.3)	13,200 (66.9)
45				12,600 (24.4)	12,900 (38.2)	13,100 (46.4)	13,250 (52.3)	13,450 (57)	13,350 (60.8)	11,800 (63.7)
50					10,200 (29.5)	10,400 (40.1)	10,550 (47.2)	10,700 (52.6)	10,800 (56.9)	10,550 (60.5)
55					8,200 (18.5)	8,400 (33.7)	8,550 (42.3)	8,700 (48.5)	8,800 (53.3)	8,950 (57.3)
60						6,750 (24.8)	6,900 (36.2)	7,050 (43.6)	7,150 (49.2)	7,250 (53.6)
65						*4,100 (9.8)	5,550 (29)	5,700 (38.2)	5,800 (44.7)	5,900 (49.8)
70							4,400 (19.3)	4,550 (32.1)	4,650 (39.9)	4,750 (45.7)
75								3,600 (24.6)	3,700 (34.5)	3,800 (41.4)
80								2,800 (13.2)	2,900 (28.3)	3,000 (36.6)
85									2,150 (20.1)	2,300 (31.1)
90										1,650 (24.6)
95										1,100 (15.3)
Minimum boom angle (°) for indicated length (no load)						0	3	5	7	10
Maximum boom length (ft.) at 0° boom angle (no load)						70				

NOTE: () Boom angles are in degrees.

*Loads are structurally limited.

#LMI operating code. Refer to LMI manual for operating instructions.

Lifting Capacities at Zero Degree Boom Angle										
Boom Angle	Main Boom Length in Feet									
	31.2	38	46	54	62					
0°	9,500 (27)	6,500 (33.8)	4,200 (41.8)	2,550 (49.8)	1,350 (57.8)					

NOTE: () Reference radii in feet.

**RATED LIFTING CAPACITIES IN POUNDS WITH 3000 lb COUNTERWEIGHT
31.2 FT. - 102 FT. BOOM**

ON OUTRIGGERS FULLY EXTENDED - OVER REAR

Radius in Feet	#0003									
	Main Boom Length in Feet									
	31.2	38	46	54	62	70	78	86	94	102
8	100,000 (68.3)									
10	93,350 (64.2)	51,200 (69.2)	50,350 (73.1)							
12	80,950 (59.9)	51,200 (65.8)	50,350 (70.4)	50,250 (73.7)						
15	64,400 (53)	51,200 (60.7)	50,350 (66.4)	50,250 (70.3)	50,000 (73.3)					
20	47,300 (39.8)	47,650 (51.3)	47,950 (59.3)	48,150 (64.5)	46,450 (68.4)	41,000 (71.3)	34,350 (73.7)			
25	31,500 (20)	37,050 (40.3)	37,400 (51.4)	37,600 (58.3)	37,800 (63.2)	35,950 (66.9)	30,150 (69.7)	26,800 (72.2)	23,800 (74.2)	
30		29,000 (25.7)	29,850 (42.6)	30,050 (51.6)	30,250 (57.7)	30,350 (62.2)	26,750 (65.7)	23,800 (68.6)	21,250 (71)	18,950 (72.9)
35			24,450 (31.9)	24,700 (44.2)	24,850 (51.8)	25,000 (57.3)	23,700 (61.5)	21,250 (64.9)	18,950 (67.7)	17,000 (69.9)
40			16,000 (15.1)	20,500 (35.6)	20,700 (45.4)	20,850 (52.1)	21,000 (57.1)	19,100 (61.1)	17,100 (64.3)	15,350 (66.9)
45				16,750 (24.4)	16,950 (38.2)	17,100 (46.4)	17,200 (52.4)	17,050 (57.1)	15,550 (60.8)	13,950 (63.7)
50					14,150 (29.5)	14,250 (40.2)	14,400 (47.3)	14,500 (52.8)	14,200 (57.1)	12,700 (60.5)
55					11,050 (18.5)	12,100 (33.0)	12,200 (41.8)	12,300 (48.2)	12,350 (53.2)	11,650 (57.1)
60						10,400 (24.9)	10,550 (36.3)	10,650 (43.7)	10,700 (49.4)	10,750 (53.8)
65						*6,400 (9.8)	9,100 (29.1)	9,200 (38.4)	9,300 (44.9)	9,350 (50)
70							*7,900 (19.4)	8,000 (32.2)	8,050 (40.1)	8,150 (46)
75								6,950 (24.7)	7,050 (34.7)	7,100 (41.6)
80								*5,200 (13.2)	6,150 (28.4)	6,250 (36.8)
85									5,400 (20.3)	5,450 (31.3)
90										4,800 (24.8)
95										*4,000 (15.5)
97										*2,000 (8.7)
Minimum boom angle (°) for indicated length (no load)										0
Maximum boom length (ft.) at 0° boom angle (no load)										102

NOTE: () Boom angles are in degrees.

*Loads are structurally limited.

#LMI operating code. Refer to LMI manual for operating instructions.

Lifting Capacities at Zero Degree Boom Angle										
Boom Angle	Main Boom Length in Feet									
	31.2	38	46	54	62	70	78	86	94	
0°	12,450 (27)	9,250 (33.8)	6,750 (41.8)	5,000 (49.8)	3,700 (57.8)	2,700 (65.8)	1,950 (73.8)	1,300 (81.8)	700 (89.8)	

NOTE: () Reference radii in feet.

**RATED LIFTING CAPACITIES IN POUNDS WITH 3000 lb COUNTERWEIGHT
31.2' - 102' BOOM WITH 26' FIXED or 26-45' TELE EXTENSION STOWED**

ON OUTRIGGERS FULLY EXTENDED - OVER REAR

Radius in Feet	#0004									
	Main Boom Length in Feet									
	31.2	38	46	54	62	70	78	86	94	102
8	98,900 (68.3)									
10	92,250 (64.2)	50,300 (69.2)	49,600 (73.1)							
12	79,850 (59.9)	50,300 (65.8)	49,600 (70.4)	49,600 (73.7)						
15	63,300 (53)	50,300 (60.7)	49,600 (66.4)	49,600 (70.3)	49,450 (73.3)					
20	46,200 (39.8)	46,750 (51.3)	47,200 (59.3)	47,550 (64.5)	45,900 (68.4)	40,550 (71.3)	33,950 (73.7)			
25	30,400 (20)	36,150 (40.3)	36,650 (51.4)	37,000 (58.3)	37,250 (63.2)	35,500 (66.9)	29,750 (69.7)	26,400 (72.2)	23,450 (74.2)	
30		28,100 (25.7)	29,100 (42.6)	29,450 (51.6)	29,700 (57.7)	29,900 (62.2)	26,350 (65.7)	23,400 (68.6)	20,900 (71)	18,650 (72.9)
35			23,700 (31.9)	24,100 (44.2)	24,300 (51.8)	24,550 (57.3)	23,300 (61.5)	20,850 (64.9)	18,600 (67.7)	16,700 (69.9)
40			15,250 (15.1)	19,900 (35.6)	20,150 (45.4)	20,400 (52.1)	20,600 (57.1)	18,700 (61.1)	16,750 (64.3)	15,050 (66.9)
45				16,150 (24.4)	16,400 (38.2)	16,650 (46.4)	16,800 (52.4)	16,650 (57.1)	15,200 (60.8)	13,650 (63.7)
50					13,600 (29.5)	13,800 (40.2)	14,000 (47.3)	14,100 (52.8)	13,850 (57.1)	12,400 (60.5)
55					10,500 (18.5)	11,650 (33.0)	11,800 (41.8)	11,900 (48.2)	12,000 (53.2)	11,350 (57.1)
60						9,950 (24.9)	10,150 (36.3)	10,250 (43.7)	10,350 (49.4)	10,450 (53.8)
65						*5,950 (9.8)	8,700 (29.1)	8,800 (38.4)	8,950 (44.9)	9,050 (50)
70							*7,500 (19.4)	7,600 (32.2)	7,700 (40.1)	7,850 (46)
75								6,550 (24.7)	6,700 (34.7)	6,800 (41.6)
80								*4,800 (13.2)	5,800 (28.4)	5,950 (36.8)
85									5,050 (20.3)	5,150 (31.3)
90										4,500 (24.8)
95										*3,700 (15.5)
97										*1,700 (8.7)
Minimum boom angle (°) for indicated length (no load)										0
Maximum boom length (ft.) at 0° boom angle (no load)										102

NOTE: () Boom angles are in degrees.

*Loads are structurally limited.

#LMI operating code. Refer to LMI manual for operating instructions.

Lifting Capacities at Zero Degree Boom Angle										
Boom Angle	Main Boom Length in Feet									
	31.2	38	46	54	62	70	78	86		
0°	11,350 (27)	8,350 (33.8)	6,000 (41.8)	4,400 (49.8)	3,150 (57.8)	2,250 (65.8)	1,550 (73.8)	900 (81.8)		

NOTE: () Reference radii in feet.

26 FT. FIXED AND 26 FT. - 45 FT. TELE OFFSETTABLE BOOM EXTENSION
WITH 3000 lb COUNTERWEIGHT

ON OUTRIGGERS FULLY EXTENDED - 360°

Radius in Feet	**26 ft. LENGTH		45 ft. LENGTH	
	#0005	#0007	#0009	#0011
	0° OFFSET	30° OFFSET	0° OFFSET	30° OFFSET
40	8,500 (71.6)			
45	8,400 (69.5)	5,950 (75.1)	5,700 (72.6)	
50	8,050 (67.2)	5,900 (72.7)	5,650 (70.7)	
55	7,450 (64.7)	5,750 (70.3)	5,600 (68.9)	
60	7,000 (62.3)	5,550 (67.7)	5,350 (66.9)	3,400 (74.8)
65	6,500 (59.7)	5,350 (65)	5,000 (64.7)	3,250 (72.6)
70	6,000 (57)	5,200 (62.3)	4,700 (62.6)	3,150 (70)
75	5,650 (54.3)	5,050 (59.4)	4,400 (60.3)	3,050 (68)
80	5,100 (51.3)	4,800 (56.4)	4,200 (58.1)	2,950 (65.5)
85	4,350 (48.1)	4,550 (53.2)	3,950 (55.7)	2,850 (63)
90	3,750 (44.8)	4,150 (49.7)	3,750 (53.2)	2,800 (60.4)
95	3,150 (41.3)	3,550 (46)	3,550 (50.7)	2,750 (57.7)
100	2,700 (37.5)	2,950 (41.8)	3,400 (48)	2,700 (54.9)
105	2,250 (33.3)	2,450 (37.3)	3,050 (45.1)	2,650 (51.9)
110	1,850 (28.6)	2,000 (32.1)	2,650 (41.9)	2,600 (48.6)
115	1,500 (23)		2,250 (38.6)	2,550 (45.1)
120	1,200 (15.5)		1,950 (35)	2,250 (41.1)
125			1,650 (31)	1,850 (36.4)
130			1,350 (26.4)	1,500 (30.9)
135			1,100 (20.9)	
140			850 (13.2)	
Min. boom angle for indicated length (no load)	10°	30°	10°	30°
Max. boom length at 0° boom angle (no load)	70 ft.		70 ft.	

NOTE: () Boom angles are in degrees.

#LMI operating code. Refer to LMI manual for instructions

**26 ft. capacities are applicable to both 26' fixed and 26' tele extension.

BOOM EXTENSION CAPACITY

NOTES:

1. All capacities above the bold line are based on structural strength limitations.
 2. 26 ft. and 45 ft. extension lengths may be used for single line lifting service.
 3. Radii listed are for a fully extended boom with the boom extension erected. For main boom lengths less than fully extended, the rated loads are determined by boom angle. Use only the column which corresponds to the boom extension length and offset for which the machine is configured. For boom angles not shown, use the rating of the next lower boom angle.
- WARNING:** Operation of this machine with heavier loads than the capacities listed is strictly prohibited. Machine tipping with boom extension occurs rapidly and without advance warning.
4. Boom angle is the angle above or below horizontal of the longitudinal axis of the boom base section after lifting rated load.
 5. Capacities listed are with outriggers properly extended and vertical jacks set only.

**26 FT. FIXED AND 26 FT. - 45 FT. TELE OFFSETTABLE BOOM EXTENSION
WITH 3000 lb COUNTERWEIGHT**

ON OUTRIGGERS FULLY EXTENDED - OVER REAR

Radius in Feet	**26 ft. LENGTH		45 ft. LENGTH	
	#0006	#0008	#0010	#0012
	0° OFFSET	30° OFFSET	0° OFFSET	30° OFFSET
40	8,500 (71.6)			
45	8,400 (69.5)	5,950 (75.1)	5,700 (72.6)	
50	8,050 (67.2)	5,900 (72.7)	5,650 (70.7)	
55	7,450 (64.7)	5,750 (70.3)	5,600 (68.9)	
60	7,000 (62.3)	5,550 (67.7)	5,350 (66.9)	3,400 (74.8)
65	6,500 (59.7)	5,350 (65)	5,000 (64.7)	3,250 (72.6)
70	6,000 (57)	5,200 (62.3)	4,700 (62.6)	3,150 (70)
75	5,650 (54.3)	5,050 (59.4)	4,400 (60.3)	3,050 (68)
80	5,300 (51.4)	4,800 (56.4)	4,200 (58.1)	2,950 (65.5)
85	5,000 (48.4)	4,550 (53.2)	3,950 (55.7)	2,850 (63)
90	4,450 (45.1)	4,350 (49.8)	3,750 (53.2)	2,800 (60.4)
95	3,900 (41.6)	4,150 (46.2)	3,550 (50.7)	2,750 (57.7)
100	3,450 (37.8)	3,750 (42.2)	3,400 (48)	2,700 (54.9)
105	3,050 (33.7)	3,250 (37.6)	3,250 (45.3)	2,650 (51.9)
110	2,650 (29)	2,800 (32.4)	3,100 (42.3)	2,600 (48.6)
115	2,250 (23.4)		2,900 (39.1)	2,550 (45.1)
120	*1,600 (15.7)		2,550 (35.4)	2,500 (41.2)
125			2,300 (31.5)	2,450 (36.7)
130			2,000 (26.9)	2,150 (31.1)
135			1,750 (21.5)	
140			900 (13.2)	
Min. boom angle for indicated length (no load)	10°	30°	10°	30°
Max. boom length at 0° boom angle (no load)	70 ft.		70 ft.	

NOTE: () Boom angles are in degrees.

*Loads are structurally limited.

#LMI operating code. Refer to LMI manual for instructions.

**26 ft. capacities are applicable to both 26' fixed and 26' tele extension.

BOOM EXTENSION CAPACITY NOTES:

1. All capacities above the bold line are based on structural strength limitations
2. 26 ft. and 45 ft. extension lengths may be used for single line lifting service.
3. Radii listed are for a fully extended boom with the boom extension erected. For main boom lengths less than fully extended, the rated loads are determined by boom angle. Use only the column which corresponds to the boom extension length and offset for which the machine is configured. For boom angles not shown, use the rating of the next lower boom angle.

WARNING: Operation of this machine with heavier loads than the capacities listed is strictly prohibited. Machine tipping with boom extension occurs rapidly and without advance warning.
4. Boom angle is the angle above or below horizontal of the longitudinal axis of the boom base section after lifting rated load.
5. Capacities listed are with outriggers properly extended and vertical jacks set only.

**RATED LIFTING CAPACITIES IN POUNDS WITH 3000 lb COUNTERWEIGHT
31.2 FT. - 102 FT. BOOM
ON OUTRIGGERS 50% EXTENDED - 360°**

Radius in Feet	#0401									
	Main Boom Length in Feet									
	31.2	38	46	54	62	70	78	86	94	102
8	100,000 (68.3)									
10	93,350 (64.2)	51,200 (69.2)	50,350 (73.1)							
12	80,950 (59.9)	51,200 (65.8)	50,350 (70.4)	50,250 (73.7)						
15	56,100 (53)	51,200 (60.7)	50,350 (66.4)	50,250 (70.3)	50,000 (73.3)					
20	30,500 (39.8)	31,100 (51.2)	31,500 (59.2)	31,800 (64.4)	32,050 (68.2)	32,300 (71.1)	32,550 (73.6)			
25	19,700 (20)	20,300 (40.3)	20,700 (51.3)	20,950 (58.1)	21,150 (62.9)	21,300 (66.5)	21,500 (69.4)	21,650 (71.9)	21,850 (74.0)	
30		14,350 (25.7)	14,750 (42.5)	15,000 (51.4)	15,200 (57.4)	15,350 (61.8)	15,500 (65.2)	15,600 (68.1)	15,750 (70.5)	15,900 (72.6)
35			11,000 (32.9)	11,250 (44)	11,400 (51.5)	11,550 (56.8)	11,650 (60.9)	11,750 (64.2)	11,850 (67)	11,950 (69.3)
40			8,450 (17.4)	8,600 (36.3)	8,750 (45.8)	8,900 (52.1)	9,000 (56.9)	9,100 (60.7)	9,150 (63.8)	9,250 (66.4)
45				6,800 (25.5)	6,950 (38.7)	7,100 (46.6)	7,200 (52.2)	7,300 (56.6)	7,350 (60.2)	7,450 (63.1)
50					5,500 (30.2)	5,600 (40.4)	5,700 (47.3)	5,800 (52.4)	5,850 (56.4)	5,900 (59.7)
55					4,300 (18.4)	4,450 (33.4)	4,550 (41.8)	4,600 (47.9)	4,700 (52.5)	4,750 (56.3)
60						3,500 (24.6)	3,600 (35.8)	3,650 (43)	3,700 (48.4)	3,800 (52.7)
65						2,700 (9.7)	2,800 (28.6)	2,900 (37.7)	2,950 (44)	3,000 (48.9)
70							2,150 (19)	2,200 (31.6)	2,300 (39.2)	2,350 (44.8)
75								1,650 (24.1)	1,700 (33.9)	1,750 (40.5)
80								1,150 (12.8)	1,250 (27.6)	1,300 (35.8)
85									800 (19.6)	850 (30.3)
90										500 (23.8)
Minimum boom angle (°) for indicated length (no load)									0	22
Maximum boom length (ft.) at 0° boom angle (no load)									94	

NOTE: () Boom angles are in degrees.
#LMI operating code. Refer to LMI manual for operating instructions.

Lifting Capacities at Zero Degree Boom Angle										
Boom Angle	Main Boom Length in Feet									
	31.2	38	46	54	62	70	78	86		
0°	12,450 (27)	9,250 (33.8)	6,750 (41.8)	5,000 (49.8)	3,700 (57.8)	2,550 (65.8)	1,650 (73.8)	950 (81.8)		

NOTE: () Reference radii in feet.

RATED LIFTING CAPACITIES IN POUNDS WITH 3000 lb COUNTERWEIGHT
31.2' - 102' BOOM WITH 26' FIXED or 26-45' TELE EXTENSION STOWED
ON OUTRIGGERS 50% EXTENDED - 360°

Radius in Feet	#0402									
	Main Boom Length in Feet									
	31.2	38	46	54	62	70	78	86	94	102
8	98,900 (68.3)									
10	92,250 (64.2)	50,300 (69.2)	49,600 (73.1)							
12	79,850 (59.9)	50,300 (65.8)	49,600 (70.4)	49,600 (73.7)						
15	55,000 (53)	50,300 (60.7)	49,600 (66.4)	49,600 (70.3)	49,450 (73.3)					
20	29,400 (39.8)	30,200 (51.2)	30,750 (59.2)	31,200 (64.4)	31,500 (68.2)	31,850 (71.1)	32,150 (73.6)			
25	18,600 (20)	19,400 (40.3)	19,950 (51.3)	20,350 (58.1)	20,600 (62.9)	20,850 (66.5)	21,100 (69.4)	21,250 (71.9)	21,500 (74.0)	
30		13,450 (25.7)	14,000 (42.5)	14,400 (51.4)	14,650 (57.4)	14,900 (61.8)	15,100 (65.2)	15,200 (68.1)	15,400 (70.5)	15,600 (72.6)
35			10,250 (32.9)	10,650 (44)	10,850 (51.5)	11,100 (56.8)	11,250 (60.9)	11,350 (64.2)	11,500 (67)	11,650 (69.3)
40			7,700 (17.4)	8,000 (36.3)	8,200 (45.8)	8,450 (52.1)	8,600 (56.9)	8,700 (60.7)	8,800 (63.8)	8,950 (66.4)
45				6,200 (25.5)	6,400 (38.7)	6,650 (46.6)	6,800 (52.2)	6,900 (56.6)	7,000 (60.2)	7,150 (63.1)
50					4,950 (30.2)	5,150 (40.4)	5,300 (47.3)	5,400 (52.4)	5,500 (56.4)	5,600 (59.7)
55					3,750 (18.4)	4,000 (33.4)	4,150 (41.8)	4,200 (47.9)	4,350 (52.5)	4,450 (56.3)
60						3,050 (24.6)	3,200 (35.8)	3,250 (43)	3,350 (48.4)	3,500 (52.7)
65						2,250 (9.7)	2,400 (28.6)	2,500 (37.7)	2,600 (44)	2,700 (48.9)
70							1,750 (19)	1,800 (31.6)	1,950 (39.2)	2,050 (44.8)
75								1,250 (24.1)	1,350 (33.9)	1,450 (40.5)
80								750 (12.8)	900 (27.6)	1,000 (35.8)
85										550 (30.3)
Minimum boom angle (°) for indicated length (no load)									0	22
Maximum boom length (ft.) at 0° boom angle (no load)									94	

NOTE: () Boom angles are in degrees.

#LMI operating code. Refer to LMI manual for operating instructions.

Lifting Capacities at Zero Degree Boom Angle										
Boom Angle	Main Boom Length in Feet									
	31.2	38	46	54	62	70	78	86		
0°	11,350 (27)	8,350 (33.8)	6,000 (41.8)	4,400 (49.8)	3,150 (57.8)	2,100 (65.8)	1,250 (73.8)	550 (81.8)		

NOTE: () Reference radii in feet.

**RATED LIFTING CAPACITIES IN POUNDS WITH 3000 lb COUNTERWEIGHT
31.2' - 102' BOOM WITH 26' FIXED ERECTED or 26-45' EXT ERECTED, RETRACTED
ON OUTRIGGERS 50% EXTENDED - 360°**

Radius in Feet	#0417									
	Main Boom Length in Feet									
	31.2	38	46	54	62	70	78	86	94	102
8	97,450 (68.3)									
10	90,800 (64.2)	48,800 (69.2)	48,050 (73.1)							
12	78,400 (59.9)	48,800 (65.8)	48,050 (70.4)	48,000 (73.7)						
15	53,550 (53)	48,800 (60.7)	48,050 (66.4)	48,000 (70.3)	47,800 (73.3)					
20	27,950 (39.8)	28,700 (51.2)	29,200 (59.2)	29,550 (64.4)	29,850 (68.2)	30,150 (71.1)	30,450 (73.6)			
25	17,150 (20)	17,900 (40.3)	18,400 (51.3)	18,700 (58.1)	18,950 (62.9)	19,150 (66.5)	19,400 (69.4)	19,550 (71.9)	19,800 (74.0)	
30		11,950 (25.7)	12,450 (42.5)	12,750 (51.4)	13,000 (57.4)	13,200 (61.8)	13,400 (65.2)	13,500 (68.1)	13,700 (70.5)	13,850 (72.6)
35			8,700 (32.9)	9,000 (44)	9,200 (51.5)	9,400 (56.8)	9,550 (60.9)	9,650 (64.2)	9,800 (67)	9,900 (69.3)
40			6,150 (17.4)	6,350 (36.3)	6,550 (45.8)	6,750 (52.1)	6,900 (56.9)	7,000 (60.7)	7,100 (63.8)	7,200 (66.4)
45				4,550 (25.5)	4,750 (38.7)	4,950 (46.6)	5,100 (52.2)	5,200 (56.6)	5,300 (60.2)	5,400 (63.1)
50					3,300 (30.2)	3,450 (40.4)	3,600 (47.3)	3,700 (52.4)	3,800 (56.4)	3,850 (59.7)
55					2,100 (18.4)	2,300 (33.4)	2,450 (41.8)	2,500 (47.9)	2,650 (52.5)	2,700 (56.3)
60						1,350 (24.6)	1,500 (35.8)	1,550 (43)	1,650 (48.4)	1,750 (52.7)
65						550 (9.7)	700 (28.6)	800 (37.7)	900 (44)	950 (48.9)
Minimum boom angle (°) for indicated length (no load)					0	5	26	35	41	44
Maximum boom length (ft.) at 0° boom angle (no load)					62					

NOTE: () Boom angles are in degrees.

#LMI operating code. Refer to LMI manual for operating instructions.

Lifting Capacities at Zero Degree Boom Angle										
Boom Angle	Main Boom Length in Feet									
	31.2	38	46	54	62					
0°	9,900 (27)	6,850 (33.8)	4,450 (41.8)	2,750 (49.8)	1,500 (57.8)					

NOTE: () Reference radii in feet.

RATED LIFTING CAPACITIES IN POUNDS WITH 3000 lb COUNTERWEIGHT
31.2' - 102' BOOM WITH 26-45' EXT ERECTED, EXTENDED
ON OUTRIGGERS 50% EXTENDED - 360°

Radius in Feet	#0418									
	Main Boom Length in Feet									
	31.2	38	46	54	62	70	78	86	94	102
8	97,050 (68.3)									
10	90,400 (64.2)	48,450 (69.2)	47,800 (73.1)							
12	78,000 (59.9)	48,450 (65.8)	47,800 (70.4)	47,800 (73.7)						
15	53,150 (53)	48,450 (60.7)	47,800 (66.4)	47,800 (70.3)	47,650 (73.3)					
20	27,550 (39.8)	28,350 (51.2)	28,950 (59.2)	29,350 (64.4)	29,700 (68.2)	30,000 (71.1)	30,300 (73.6)			
25	16,750 (20)	17,550 (40.3)	18,150 (51.3)	18,500 (58.1)	18,800 (62.9)	19,000 (66.5)	19,250 (69.4)	19,450 (71.9)	19,650 (74.0)	
30		11,600 (25.7)	12,200 (42.5)	12,550 (51.4)	12,850 (57.4)	13,050 (61.8)	13,250 (65.2)	13,400 (68.1)	13,550 (70.5)	13,750 (72.6)
35			8,450 (32.9)	8,800 (44)	9,050 (51.5)	9,250 (56.8)	9,400 (60.9)	9,550 (64.2)	9,650 (67)	9,800 (69.3)
40			5,900 (17.4)	6,150 (36.3)	6,400 (45.8)	6,600 (52.1)	6,750 (56.9)	6,900 (60.7)	6,950 (63.8)	7,100 (66.4)
45				4,350 (25.5)	4,600 (38.7)	4,800 (46.6)	4,950 (52.2)	5,100 (56.6)	5,150 (60.2)	5,300 (63.1)
50					3,150 (30.2)	3,300 (40.4)	3,450 (47.3)	3,600 (52.4)	3,650 (56.4)	3,750 (59.7)
55					1,950 (18.4)	2,150 (33.4)	2,300 (41.8)	2,400 (47.9)	2,500 (52.5)	2,600 (56.3)
60						1,200 (24.6)	1,350 (35.8)	1,450 (43)	1,500 (48.4)	1,650 (52.7)
65							550 (28.6)	700 (37.7)	750 (44)	850 (48.9)
Minimum boom angle (°) for indicated length (no load)					0	10	27	36	42	46
Maximum boom length (ft.) at 0° boom angle (no load)					62					

NOTE: () Boom angles are in degrees.

#LMI operating code. Refer to LMI manual for operating instructions.

Lifting Capacities at Zero Degree Boom Angle										
Boom Angle	Main Boom Length in Feet									
	31.2	38	46	54	62					
0°	9,500 (27)	6,500 (33.8)	4,200 (41.8)	2,550 (49.8)	1,350 (57.8)					

NOTE: () Reference radii in feet.

26 FT. FIXED AND 26 FT. - 45 FT. TELE OFFSETTABLE BOOM EXTENSION
WITH 3000 lb COUNTERWEIGHT

ON OUTRIGGERS 50% EXTENDED - 360°

Radius in Feet	**26 ft. LENGTH		45 ft. LENGTH	
	#0405	#0407	#0409	#0411
	0° OFFSET	30° OFFSET	0° OFFSET	30° OFFSET
40	8,500 (71.6)			
45	7,550 (69.3)	5,950 (75.1)	5,700 (72.6)	
50	5,950 (66.6)	5,900 (72.7)	5,650 (70.7)	
55	4,700 (64)	5,750 (70.3)	5,600 (68.9)	
60	3,700 (61.3)	4,750 (67.4)	4,700 (66.5)	3,400 (74.8)
65	2,900 (58.5)	3,750 (64.4)	3,800 (64.1)	3,250 (72.6)
70	2,200 (55.7)	2,950 (61.4)	3,050 (61.7)	3,150 (70)
75	1,600 (52.8)	2,300 (58.3)	2,450 (59.3)	3,050 (68)
80	1,100 (49.8)	1,700 (55.1)	1,950 (56.8)	2,950 (65.5)
85	650 (46.6)	1,200 (51.8)	1,450 (54.2)	2,400 (62.7)
90		750 (48.3)	1,050 (51.5)	1,900 (59.9)
95			700 (48.8)	1,450 (56.9)
100				1,050 (53.8)
105				700 (50.6)
Min. boom angle for indicated length (no load)	44°	45°	46°	47°
Max. boom length at 0° boom angle (no load)	62 ft.		62 ft.	

BOOM EXTENSION CAPACITY
NOTES:

1. All capacities above the bold line are based on structural strength limitations.
2. 26 ft. and 45 ft. extension lengths may be used for single line lifting service.
3. Radii listed are for a fully extended boom with the boom extension erected. For main boom lengths less than fully extended, the rated loads are determined by boom angle. Use only the column which corresponds to the boom extension length and offset for which the machine is configured. For boom angles not shown, use the rating of the next lower boom angle.

WARNING: Operation of this machine with heavier loads than the capacities listed is strictly prohibited. Machine tipping with boom extension occurs rapidly and without advance warning.
4. Boom angle is the angle above or below horizontal of the longitudinal axis of the boom base section after lifting rated load.
5. Capacities listed are with outriggers properly extended and vertical jacks set only

NOTE: () Boom angles are in degrees.

#LMI operating code. Refer to LMI manual for instructions.

**26 ft. capacities are applicable to both 26' fixed and 26' tele extension.

**RATED LIFTING CAPACITIES IN POUNDS WITH 3000 lb COUNTERWEIGHT
31.2 FT. - 102 FT. BOOM**

ON OUTRIGGERS 0% EXTENDED - 360°

Radius in Feet	#0801									
	Main Boom Length in Feet									
	31.2	38	46	54	62	70	78	86	94	102
8	59,950 (68.3)									
10	38,300 (64.1)	38,900 (69.1)	39,350 (73.1)							
12	27,350 (59.8)	27,850 (65.8)	28,250 (70.3)	28,550 (73.5)						
15	18,300 (53)	18,800 (60.6)	19,150 (66.2)	19,400 (70.1)	19,600 (72.9)					
20	10,700 (41.1)	11,150 (52.1)	11,500 (59)	11,700 (64.2)	11,850 (67.8)	12,000 (70.6)	12,100 (72.9)			
25	6,750 (22.6)	7,250 (41.4)	7,550 (52)	7,750 (58.6)	7,900 (63.1)	8,050 (66.5)	8,150 (69.2)	8,250 (71.5)	8,350 (73.3)	
30		4,700 (27.4)	5,050 (43.3)	5,250 (51.9)	5,350 (57.7)	5,500 (61.9)	5,550 (65.2)	5,650 (67.8)	5,750 (70)	5,800 (71.8)
35			3,300 (32.9)	3,500 (44.6)	3,650 (51.9)	3,750 (57)	3,850 (60.9)	3,900 (64)	3,950 (66.6)	4,000 (68.7)
40			2,000 (17.3)	2,250 (36.2)	2,400 (45.6)	2,500 (51.9)	2,550 (56.5)	2,650 (60.2)	2,700 (63.1)	2,750 (65.6)
45				1,300 (25.4)	1,450 (38.5)	1,550 (46.4)	1,600 (51.9)	1,700 (56.2)	1,750 (59.6)	1,750 (62.3)
50					700 (30.1)	800 (40.2)	850 (47)	950 (51.9)	1,000 (55.9)	1,000 (59)
Minimum boom angle (°) for indicated length (no load)				0	26	37	44	49	53	56
Maximum boom length (ft.) at 0° boom angle (no load)				54						

NOTE: () Boom angles are in degrees.

#LMI operating code. Refer to LMI manual for operating instructions.

Lifting Capacities at Zero Degree Boom Angle										
Boom Angle	Main Boom Length in Feet									
	31.2	38	46	54						
0°	5,500 (27)	3,200 (33.8)	1,550 (41.8)	500 (49.8)						

NOTE: () Reference radii in feet.

**RATED LIFTING CAPACITIES IN POUNDS WITH 3000 lb COUNTERWEIGHT
31.2' - 102' BOOM WITH 26' FIXED or 26-45' TELE EXTENSION STOWED**

ON OUTRIGGERS 0% EXTENDED - 360°

Radius in Feet	#0802									
	Main Boom Length in Feet									
	31.2	38	46	54	62	70	78	86	94	102
8	58,850 (68.3)									
10	37,200 (64.1)	38,000 (69.1)	38,600 (73.1)							
12	26,250 (59.8)	26,950 (65.8)	27,500 (70.3)	27,950 (73.5)						
15	17,200 (53)	17,900 (60.6)	18,400 (66.2)	18,800 (70.1)	19,050 (72.9)					
20	9,600 (41.1)	10,250 (52.1)	10,750 (59)	11,100 (64.2)	11,300 (67.8)	11,550 (70.6)	11,700 (72.9)			
25	5,650 (22.6)	6,350 (41.4)	6,800 (52)	7,150 (58.6)	7,350 (63.1)	7,600 (66.5)	7,750 (69.2)	7,850 (71.5)	8,000 (73.3)	
30		3,800 (27.4)	4,300 (43.3)	4,650 (51.9)	4,800 (57.7)	5,050 (61.9)	5,150 (65.2)	5,250 (67.8)	5,400 (70)	5,500 (71.8)
35			2,550 (32.9)	2,900 (44.6)	3,100 (51.9)	3,300 (57)	3,450 (60.9)	3,500 (64)	3,600 (66.6)	3,700 (68.7)
40			1,250 (17.3)	1,650 (36.2)	1,850 (45.6)	2,050 (51.9)	2,150 (56.5)	2,250 (60.2)	2,350 (63.1)	2,450 (65.6)
45				700 (25.4)	900 (38.5)	1,100 (46.4)	1,200 (51.9)	1,300 (56.2)	1,400 (59.6)	1,450 (62.3)
50								550 (51.9)	650 (55.9)	700 (59)
Minimum boom angle (°) for indicated length (no load)				0	26	37	44	49	53	56
Maximum boom length (ft.) at 0° boom angle (no load)				54						

NOTE: () Boom angles are in degrees.

#LMI operating code. Refer to LMI manual for operating instructions.

Lifting Capacities at Zero Degree Boom Angle										
Boom Angle	Main Boom Length in Feet									
	31.2	38	46							
0°	4,400 (27)	2,300 (33.8)	800 (41.8)							

NOTE: () Reference radii in feet.



**NATIONAL COMMISSION FOR THE
CERTIFICATION OF CRANE OPERATORS**

2750 Prosperity Avenue, Suite 505
Fairfax, VA 22031-4312

Phone: 703-560-2391

Fax: 703-560-2392

info@nccco.org

www.nccco.org